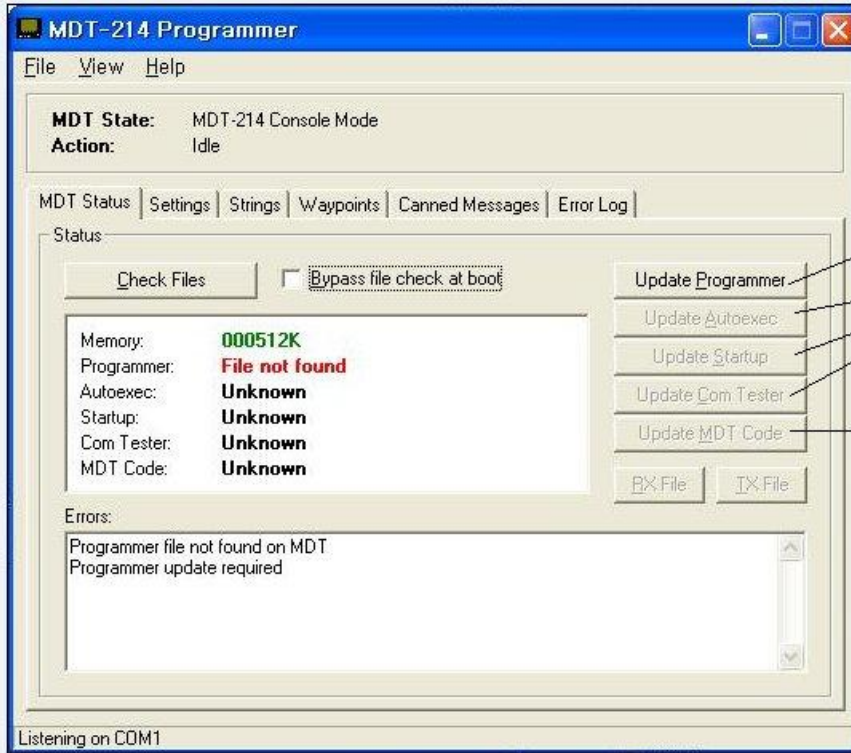


the MODE button to monitor the status of network connection. The MODE button can be pressed at any time to view status information.



START HERE  
By selecting this button "update programmer"

Step-2 updated these files

Now press this button and go to the directory where the MDT Code file is stored, open and transmit.

When file loading is completed, remove the programming cable and power cycle the MDT. Then refer to the MDT Manual "section-9" to change any settings and to select the GPRS Modem on COM-3. Please ensure you select Internal GPRS modem. 9600 baud.

After you have selected the GPRS modem. Press the MODE button to monitor the status of network connection. The MODE button can be pressed at any time to view status information.